



Park Wood

In the lap of nature

3 & 4 BHK Nature Villa



YOUR LAND, YOUR VILLA!

At An Iconic Address Set To Become The
New Destination For Super Luxury Lifestyle





RELAX IN PARKWOOD

live an elevated life... yet stay closer
to ground in a small community

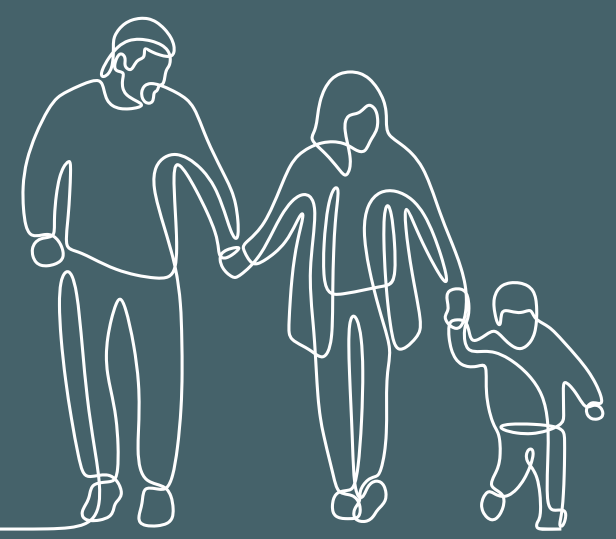
A PROJECT BY
SHIWASHAY BUILDERS



Beautifully Designed
Landscape...
It's the ideal place
outside your house
to hand around.

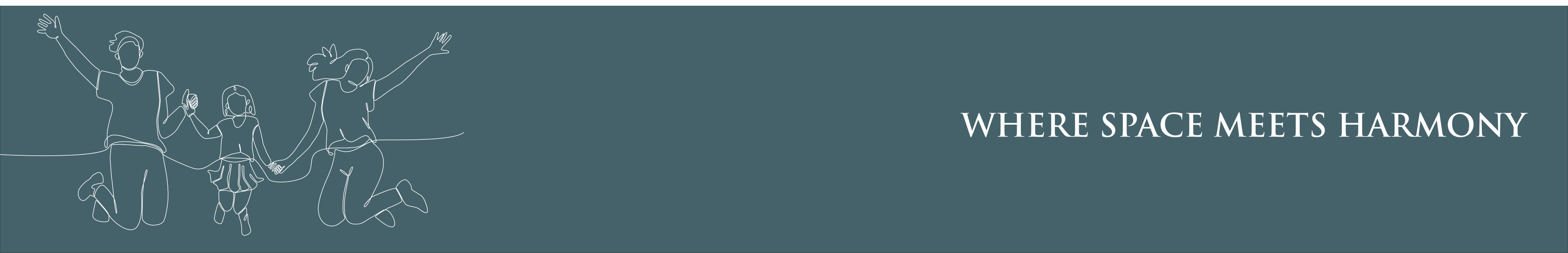
3 & 4 BHK MAJESTIC VILLAS

ELEGANT ENTRANCE GATE



INTELLIGENTLY DESIGNED FOR
EXTRAORDINARY LIFE

HIGH WAY TOUCH SOCIETY



WHERE SPACE MEETS HARMONY

LUSH.

LUSTROUS.

LUCID.

BIRD VIEW



PRIME IN ALL RESPECTS

Landscapes

GARDEN + JOGGING TRACK





THE NATURE OF HARMONY
IN OUR MASTER PLAN

THE ULTIMATE SERENITY

Befriend nature from
Your living Spaces



CHILDREN PLAY AREA



A LIFE CLOSE
TO NATURE

SWIMMING POOL
VIEW

SWIMMING POOL



SOOTHING FOR SOUL
GARDEN OF GRACE

CLUB HOUSE
VIEW

CLUB HOUSE



A LIFE MORE
EXCITING





Sitting Area



Guest Room



Banquet Hall + Kitchen



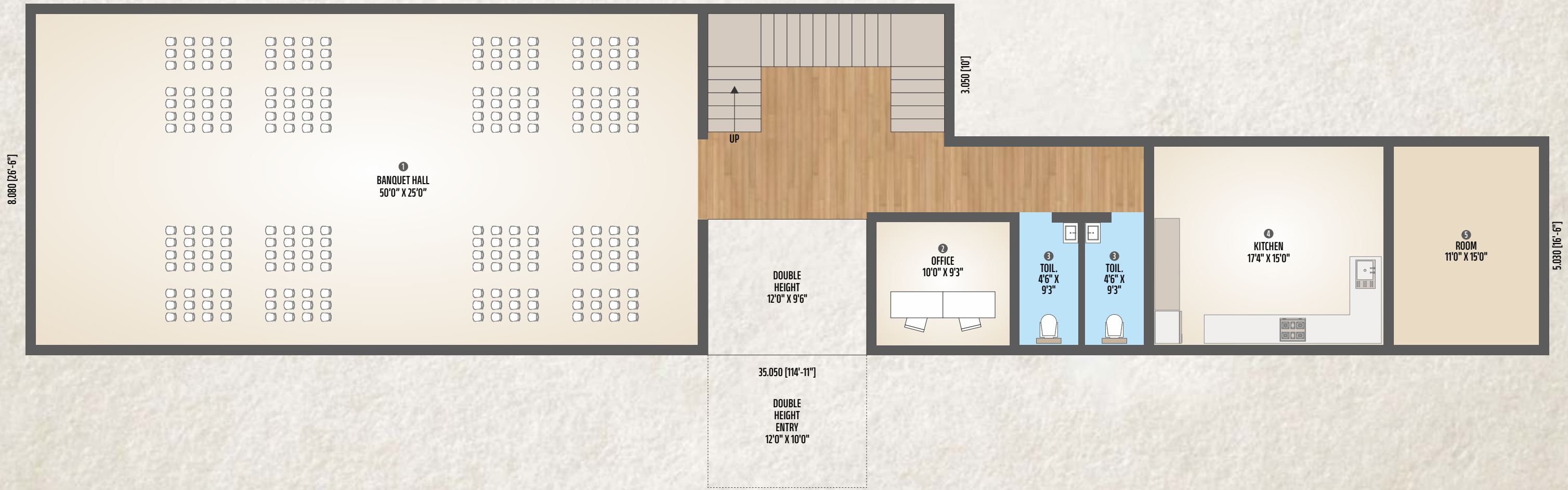
Open Terrace Garden



Indoor Game Zone

CLUB HOUSE PLAN

FIRST FLOOR



GROUND FLOOR

STREET NIGHT VIEW

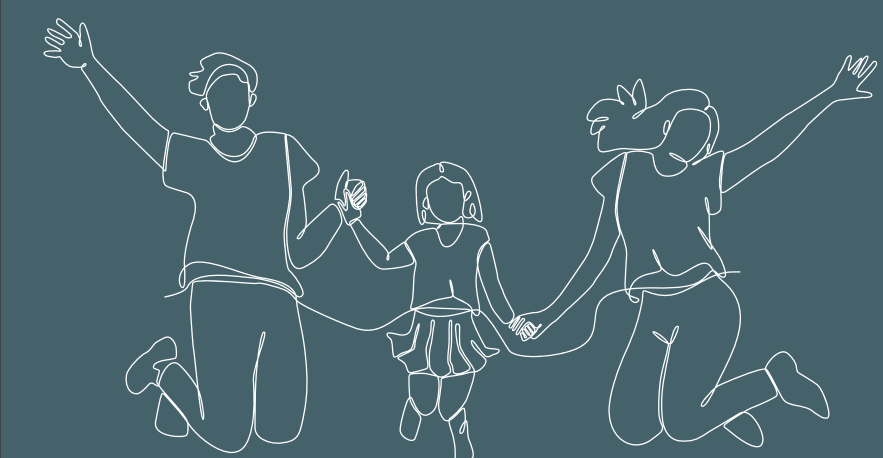


A LIFE MORE
ELEGANT



A LIFE MORE
FABULOUS

VILLA SIDE NIGHT VIEW



A LIFE CLOSE
TO NATURE

VILLA SIDE VIEW



WHERE STYLE
MEETS SUBSTANCE



4 SIDE OPEN INDEPENDENT VILLA

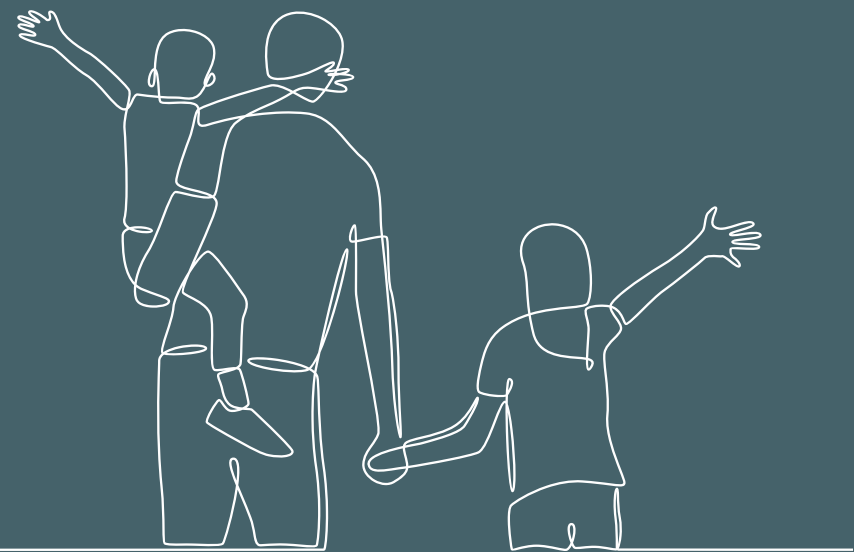


LUXURY IS A
MINDSCAPE



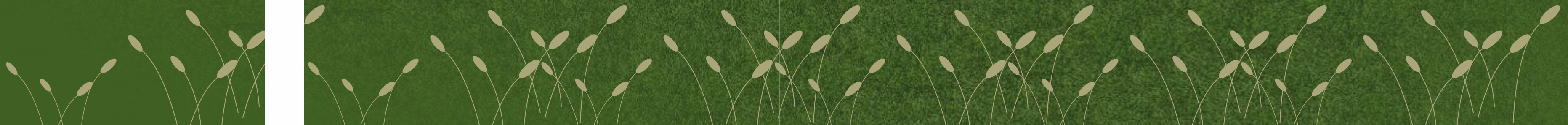
LUXURY IS
THE ABILITY TO
TAKE A PAUSE

STREET VIEW



LUXURY IS A
SOPHISTICATION

VILLA PLAN



VILLA SECTION PLAN

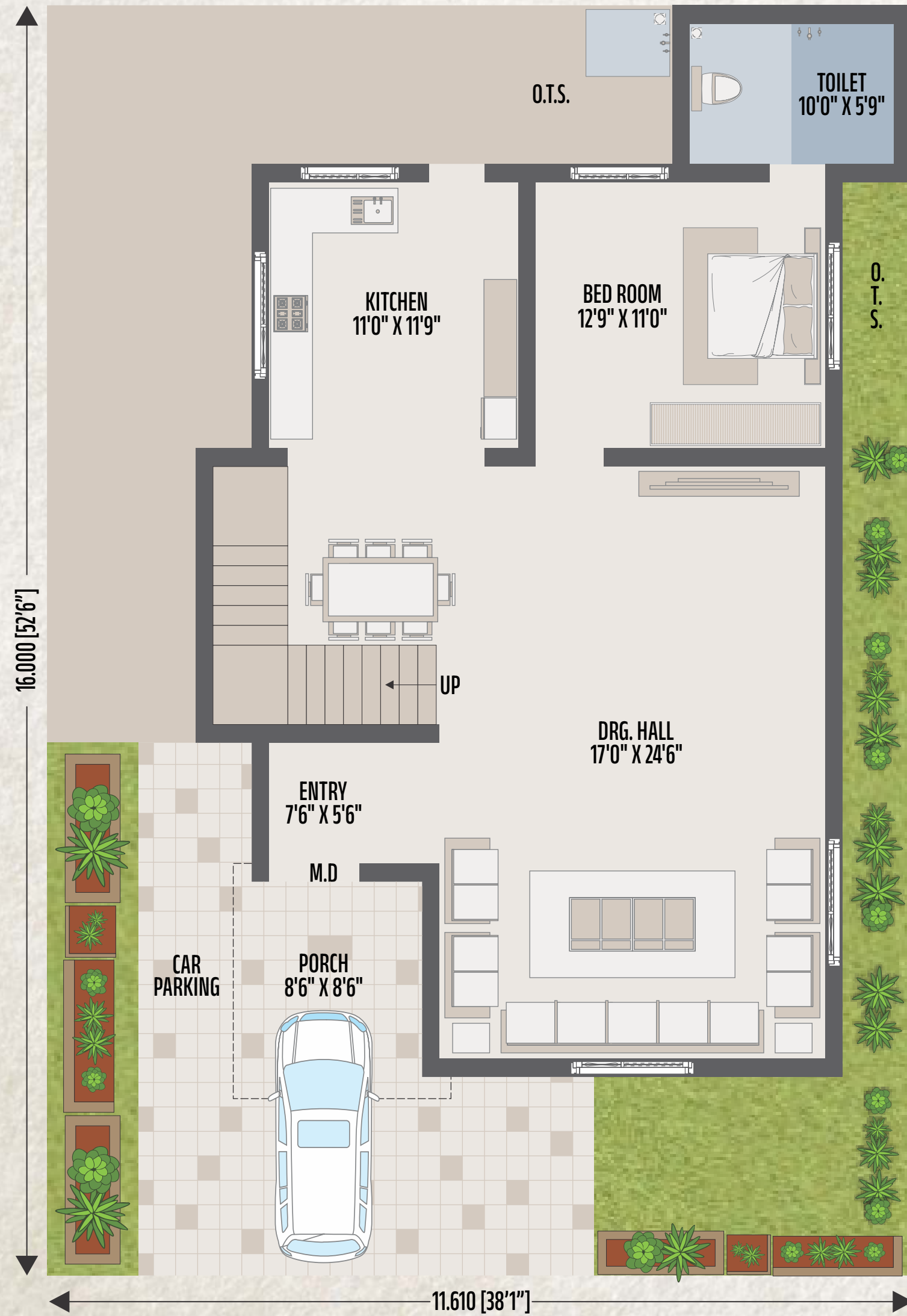


GROUND FLOOR



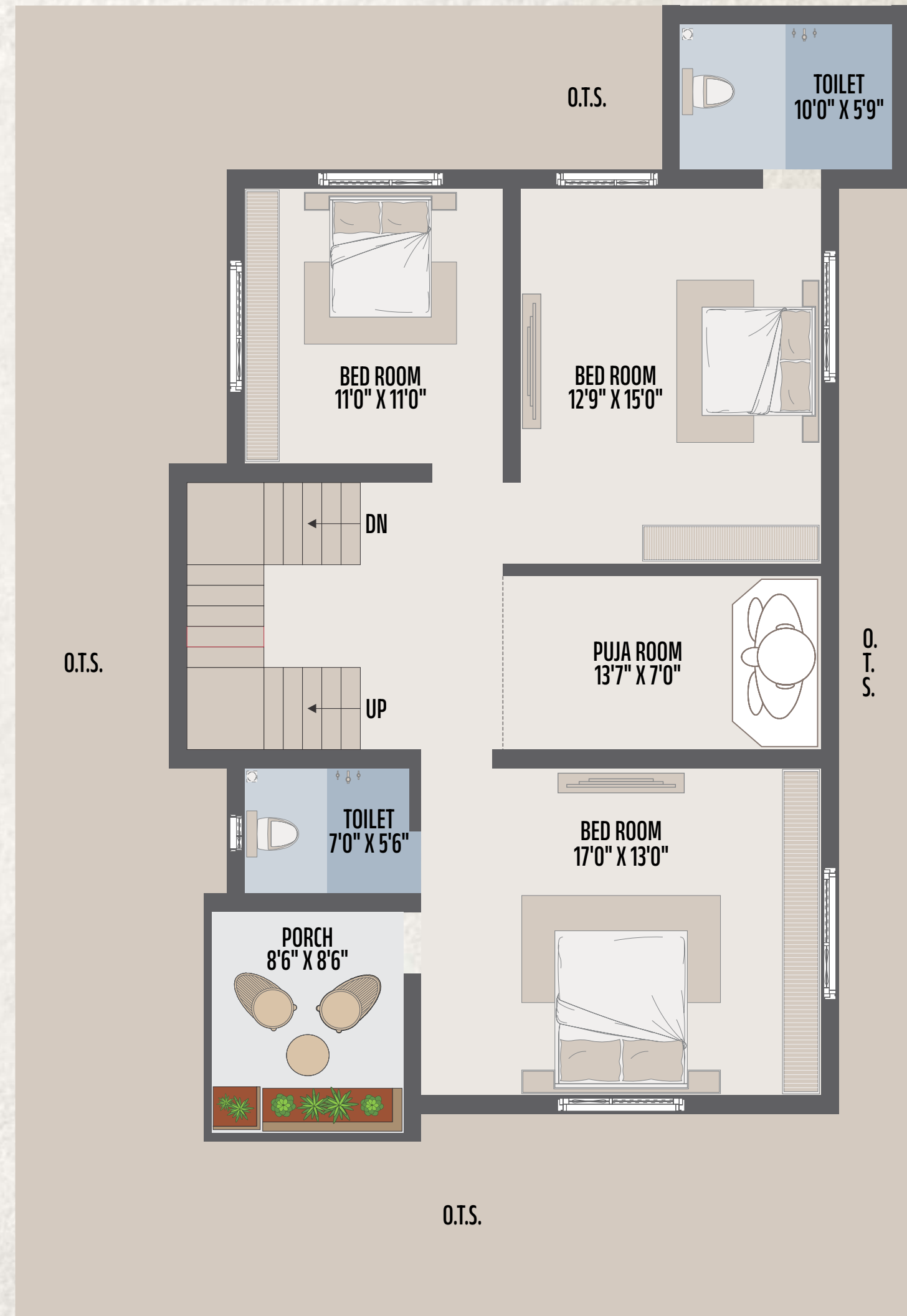
FIRST FLOOR

4 SIDE OPEN VILLA



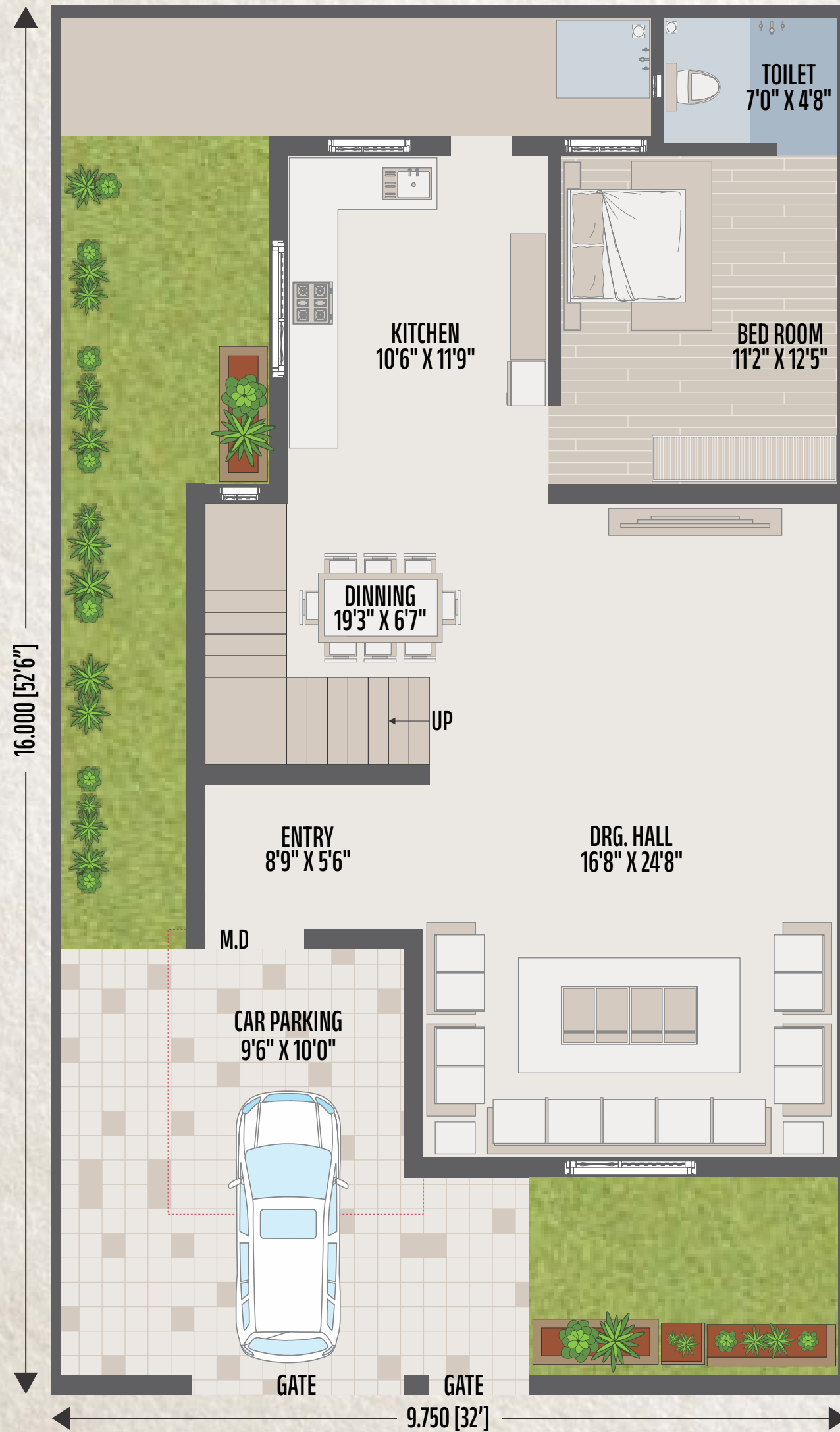
Ground Floor

PLOT - 2000



First Floor

GRAND TWIN VILLA



Ground Floor

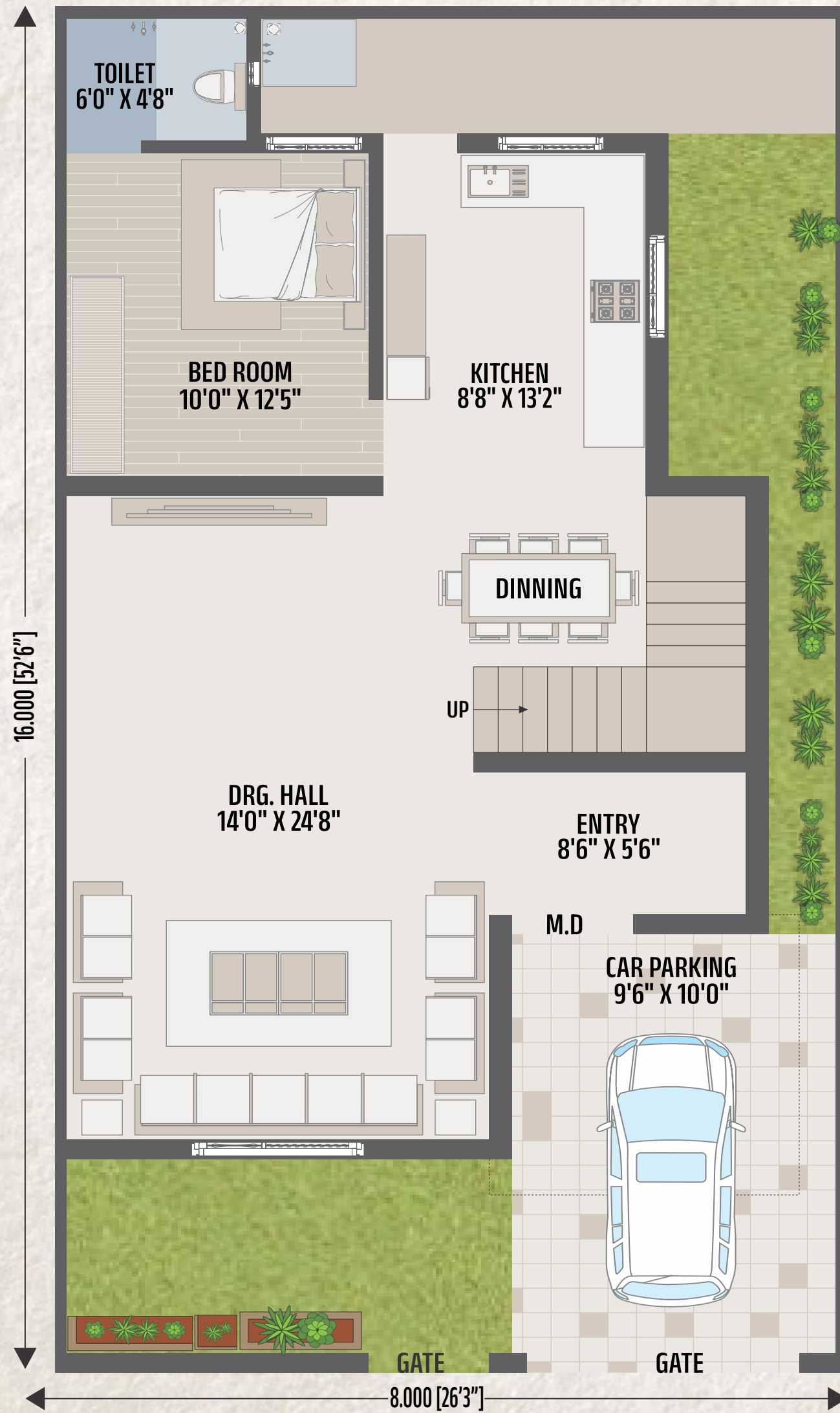
PLOT - 1680



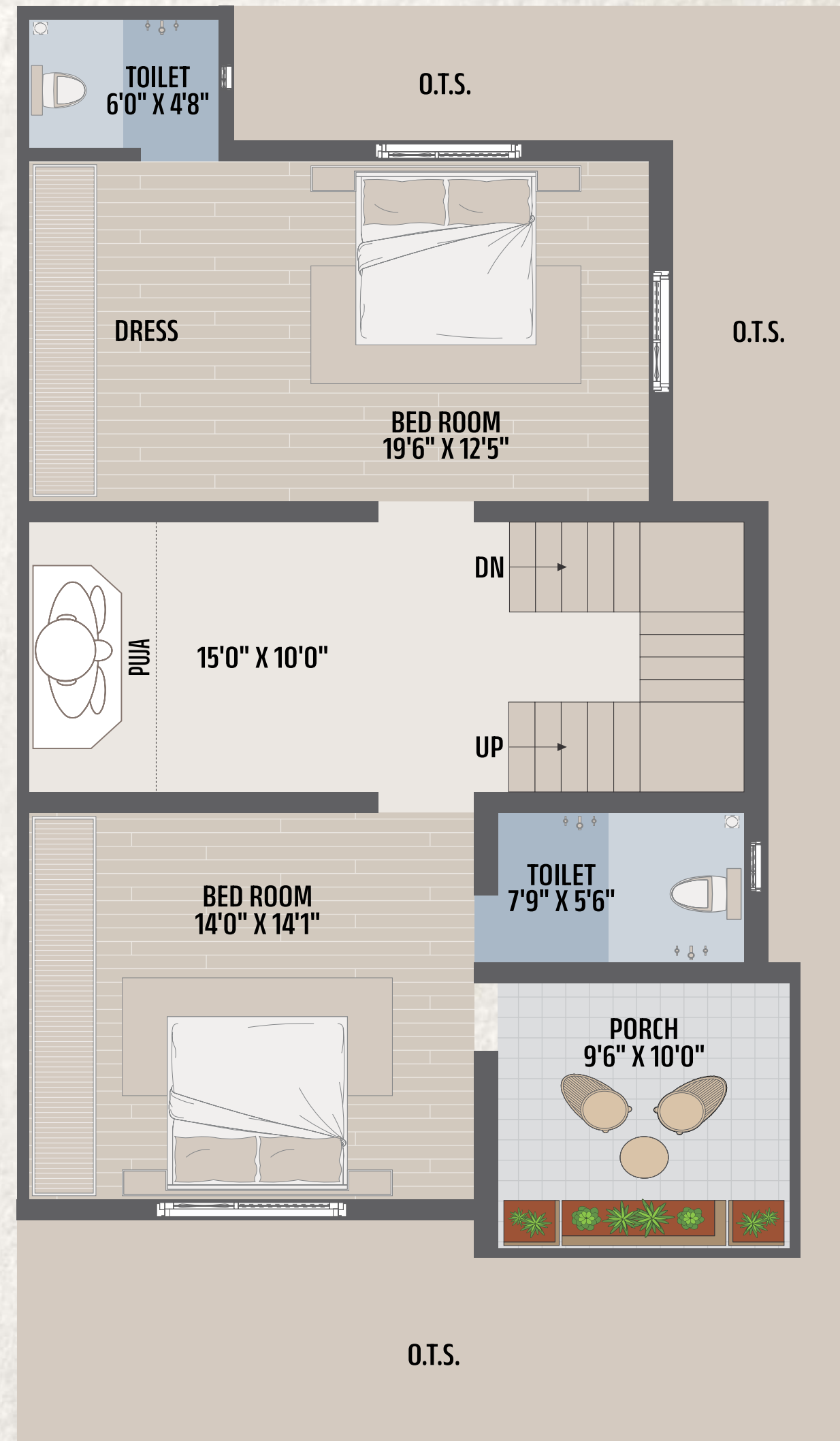
First Floor

TWIN VILLA

PLOT - 1377



Ground Floor



First Floor

Villa's Specification



STRUCTURE

- Fully RCC Column Beam Structure

ELECTRICAL

- Modular Switches (Hi Fi / Elleys)
- Concealed Wiring Of (R.R. / Polycab)
- Invertor Wiring.

PLASTER & COLOR

- Internal Plaster With Acrylic Putty Finish.
- Sand Face Plaster On Exterior Surface Of Malhar Plaster
- Paint On Exterior & Interior Walls (Asian Paint)

BATHROOM

- Fully Glazed Tiles Up To Slab Level.
- Sanitary Wares Of Well Known Brand.
- Exhaust Fan Provision.

WATER

- Underground Water Tank up to 5000 LTR
- Overhead tank 1000 LTR
- Personal Water Bor In all Bungalows

DOORS

- Decorative Laminates / Modular / Entrance Door With Lock System Of Branded Company
- All Doors With Necessary Hardware Fitting Of Well Known Brands

BATH FITTING

- APVC/ CPVC Pipes Astral
- Water Tap (Plumber / Jaguar)

POP

- Customer Choice POP in Hall & All Rooms.

KITCHEN & WASH YARD

- Fully Glazed Vitrified Tiles Up To Slab Level.
- Black / White Granite Sandwich Platform With Matt Ceramic Sink.
- Full Glazed Tiles In Wash Area With Kota Stone Shelves & Anti Skid Tiles In Flooring.
- Black Granite Service Platform In Wash Area With Sink.

FLOORING

- Big Size Premium Quality Flooring with epoxy.
- Wooden Flooring in Master Bedroom.
- China Mosaic on Terrace Floor.

SOLAR SYSTEM

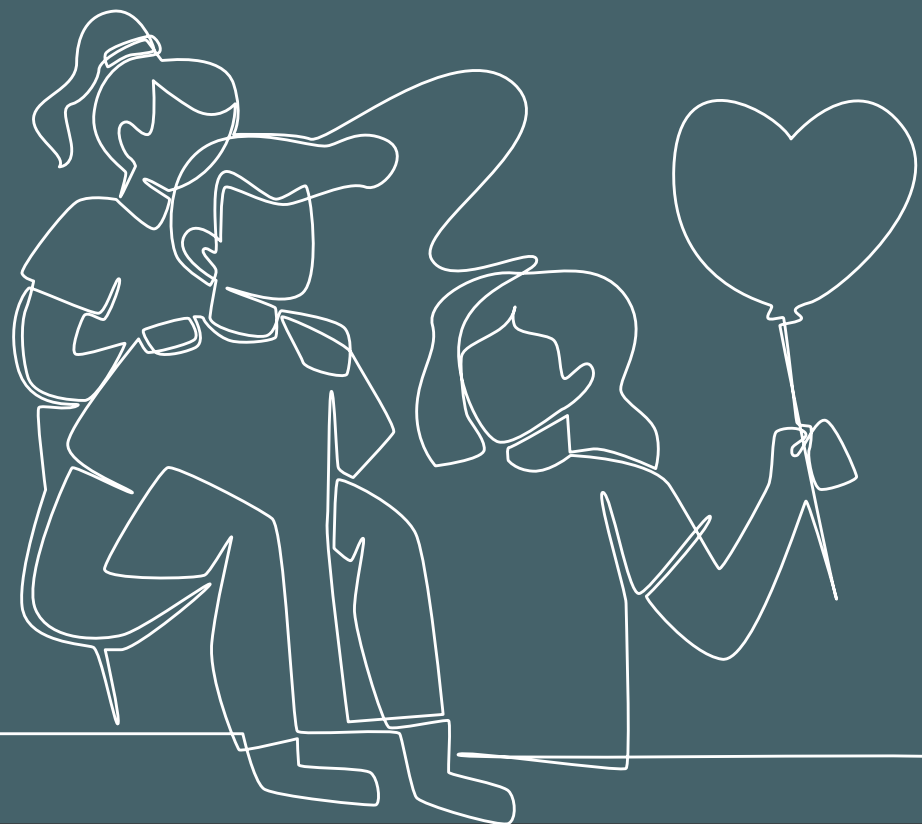
- Solar Water Heater in all Bungalows. (100 LTR)

WINDOWS

- 3 Track Aluminum Sliding Window With Mosquito Net & Safety Grill With Well Known Brand.
- Fully Granite Sill Of 4 Side In Windows

VIBRANT

AND FULL-OF-LIFE SPACES



A PRESENT - DAY
PARADISE
YOU CAN CALL HOME





RELAX IN PARKWOOD

Your Piece of sky.
Your Piece of Land.

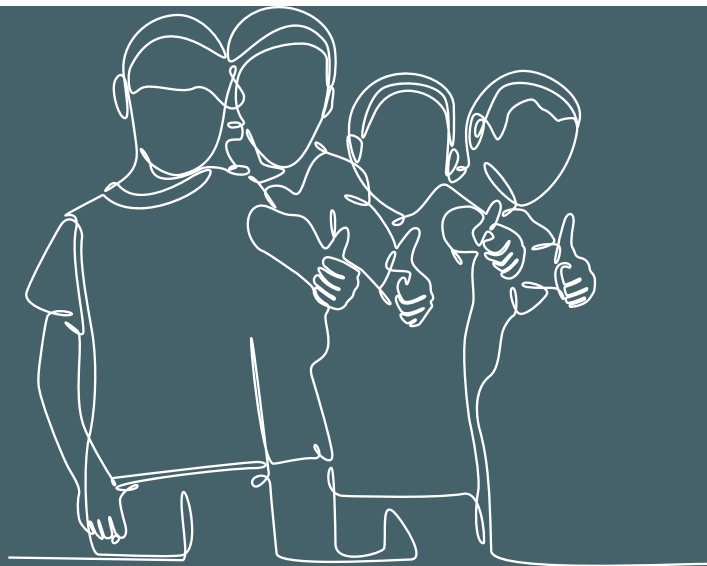
Society Amenities

 <p>Main Gate Single Entry Exit With Security Cabin</p>	 <p>Compound Wall With Fencing</p>	 <p>Banquet Hall With Kitchen</p>	 <p>Swimming Pool & Children Swimming Pool</p>	 <p>Children Play Area</p>	 <p>Guest Room</p>
 <p>Street Light</p>	 <p>12 Mtr. Road</p>	 <p>CCTV Camera 24 x 7</p>	 <p>Underground Drainage</p>	 <p>Water Connection Line</p>	
 <p>Party Lawn</p>	 <p>Lush Greenery</p>	 <p>Yoga Meditation</p>	 <p>Senior Citizen Sitting</p>	 <p>Volleyball + Badminton Court</p>	 <p>Landscaping Garden</p>
 <p>Cricket Pitch</p>	 <p>Indoor Games</p>	 <p>Club house Reception</p>	 <p>Jogging Track</p>	 <p>Society Office</p>	

A vertical white line runs down the center of the image. Above the line, there are two white, fluffy clouds. The background is a solid dark teal color.

Cloudscapes

STREET VIEW



THE PERFECT EXAMPLE OF FINE HOME AND NATURAL LIVING

REDISCOVER
YOUR LOVE FOR FRESH AIR



NEAREST LOCATIONS :

- | | | | |
|---------------------------------------------------------------------------------------------------------------|--------------------------------------------------------------------------------------------------------|------------------------------------------------------------------------------------------------------------------------------------|-------------------------------------------------------------------------------------------------------------|
|  NAND VIDHYA NIKETAN - 10 MIN |  PODAR SCHOOL - 2 MIN |  DPS SCHOOL - 5 MIN |  SAMARPAN CIRCLE - 2 MIN |
|  RELIANCE MART - 10 MIN |  BAPS - 1 MIN |  AIRPORT - 3 MIN |  RELIANCE - 25 MIN |
|  NAYARA - 35 MIN |  G.I.D.C. - 3 MIN |  World Health Origination Center(W.H.O.) - 4 MIN | |

KEY PLAN



Note :

- Payment of all extra work to be executed shall be made in advance.
- Stamp duty towards registration shall be borne by the clients.
- Municipal corporations & GEB charges, if any shall be borne by the clients.
- Any central or state govt. taxes, if applicable shall be borne by the clients.
- All members shall have to essentially be the part of the society formed by the Association.
- Legal documentation charges shall be borne by the clients of members & shall abide by the society by laws.
- Society & club house maintenance will be on clients.

The information contained in this brochure is indicative of the kind of development that is proposed. It is prepared & issued in good faith and is for guidance only. it does not constitute part of and offer or contract. the promoters reserve the rights to change plans, No. of storeys, specifications or features without prior notice of obligation. Guidelines are enforced for not allowing grills to be fixed outside windows or any changes to be made in external elevation. All the Image are just idealization.

: A Project By :



: Click Here For More Information :



: Click here to Call Us :

Mahesh Gojiya
+91 75673 59713



Jayesh Karmur
+91 95104 83150



Bhavesh Gojiya
+91 99040 22923



Site Address : Parkwood, Jamnagar - Khambhaliya Highway, Opp. Food Resort, Jamnagar.